

Lake Regency Office Building

444 REGENCY PARKWAY DRIVE
OMAHA, NEBRASKA 68114

FOR LEASE



- S.F. AVAILABLE:** SUITE 206 - 2,835 SF
- RENTAL RATES:** \$14.50 PSF, NNN.
- NNN CHARGES:** \$8.27 PSF 2017 Budget (includes Tenants gas, electric, water & 5 day a week janitorial).
- FEATURES:** Class "A" office space.
Incredible view from the offices overlooking the Lake.
Easily accessible "Regency" location.
Abundant parking.
Lakeside break area and walking path.

AGENT INFO:

Jerry Gordman

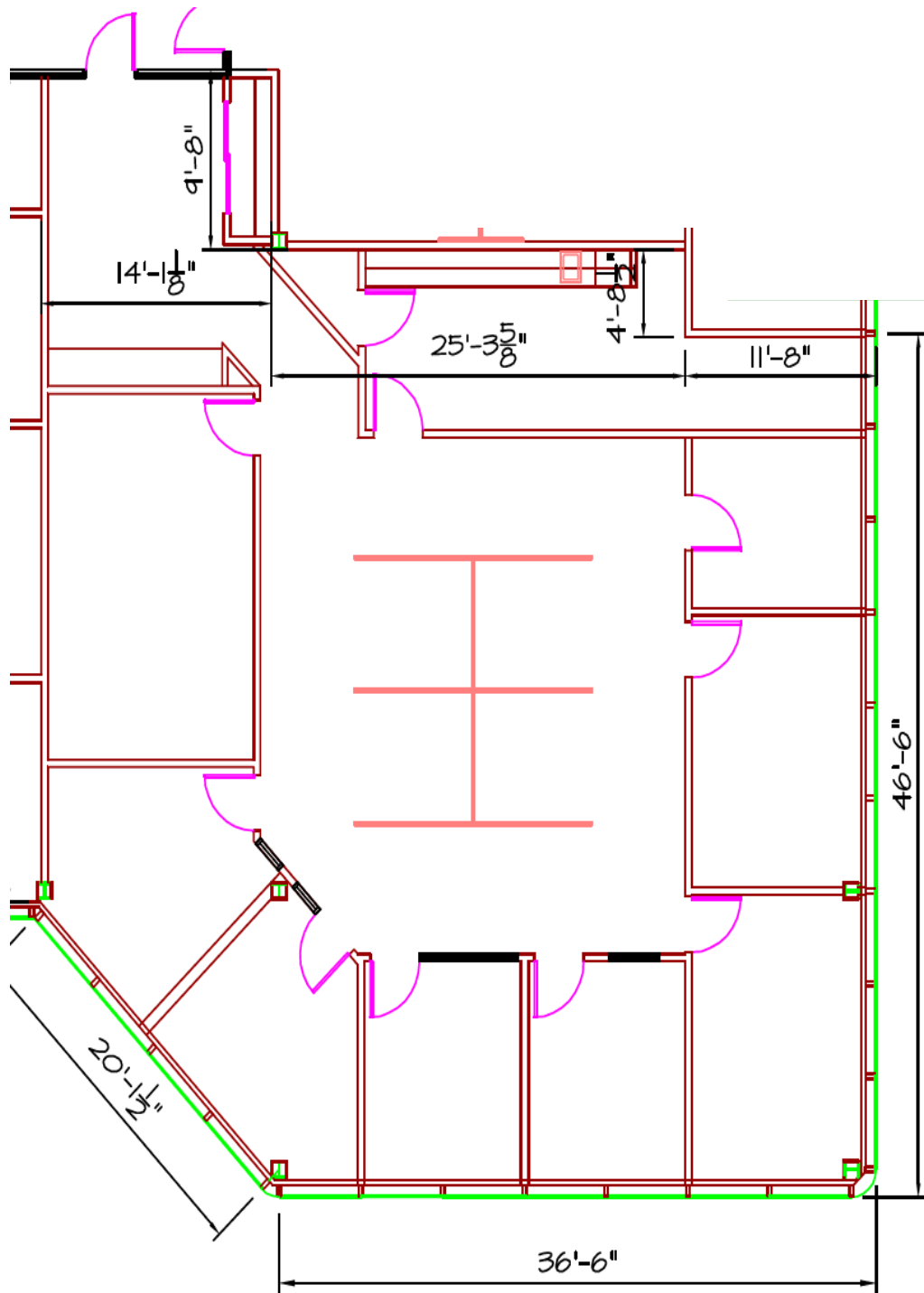
Deborah Smith

Ph: 402-391-4220

Email: ds@gordmanco.com



SUITE 206



- 2,835 Rentable SF
- Beautiful lake views
- Efficient layout
- Very nice tenant finish
- Cubicles can remain with space

